

Elementet

808 North Franklin Street | Tampa, FL 33602

Element is the best of all worlds. Luxury apartments built to standards usually reserved for high-rise condominiums. You'll enjoy 2 resort-style pools and spectacular sky deck all with exceptional city views. Appointments like 10-foot ceilings, floor-to-ceiling windows, premium imported granite and stainless steel appliances. And Element offers it all in a premier and bustling downtown location. It's more freedom. Less commitment. And all the luxury you could want.

Amenities & Community Features

Luxury amenities & accommodations have been taken into consideration for the most discriminating taste. Usually reserved for high-end luxury high-rises & condos these are the standard with your furnished apartment. Here are just a few: Controlled access throughout the building, Conveniently located elevators, Bright, stylish corridors, Street-front retail offers convenience, Concrete-and-steel construction, Wired for advanced technology features and more.

Kitchen

Microwave, coffee maker & toaster. Dishes, glasses and flatware. Complete serving pieces. Starter package including coffee packets, filters, creamers sugar, sweetener, tea bags, paper towels, sponge, dish soap, dishwasher detergent, and trash bags.

Bedroom

Complete bedroom suite w/ queen beds and spacious dresser, clothes hangers, & laundry basket.

*King and double beds, cribs, twin beds available

Deluxe Mattress and Bedding

Consumer electronics w/clock radio or ipod system

- Fully Furnished
- Spacious Layouts
- Floor-to-ceiling windows
- 10-foot ceilings
- Granite Countertops
- Dishwasher
- Refrigerator
- Air Conditioning
- Garbage Disposal
- Washer & Dryer Inc.
- Microwave
- Ceiling fans
- Expanded cable TV
- Storage Space(s)
- Large balcony
- All Paid Utilities
- Wi-Fi Internet
- Fitness Center
- Sun-decks
- Swimming Pool
- Elevator
- Pet Care Service
- Parking Space(s)



Pet Policy



Cats
Small Dogs
Large Dogs

Contact

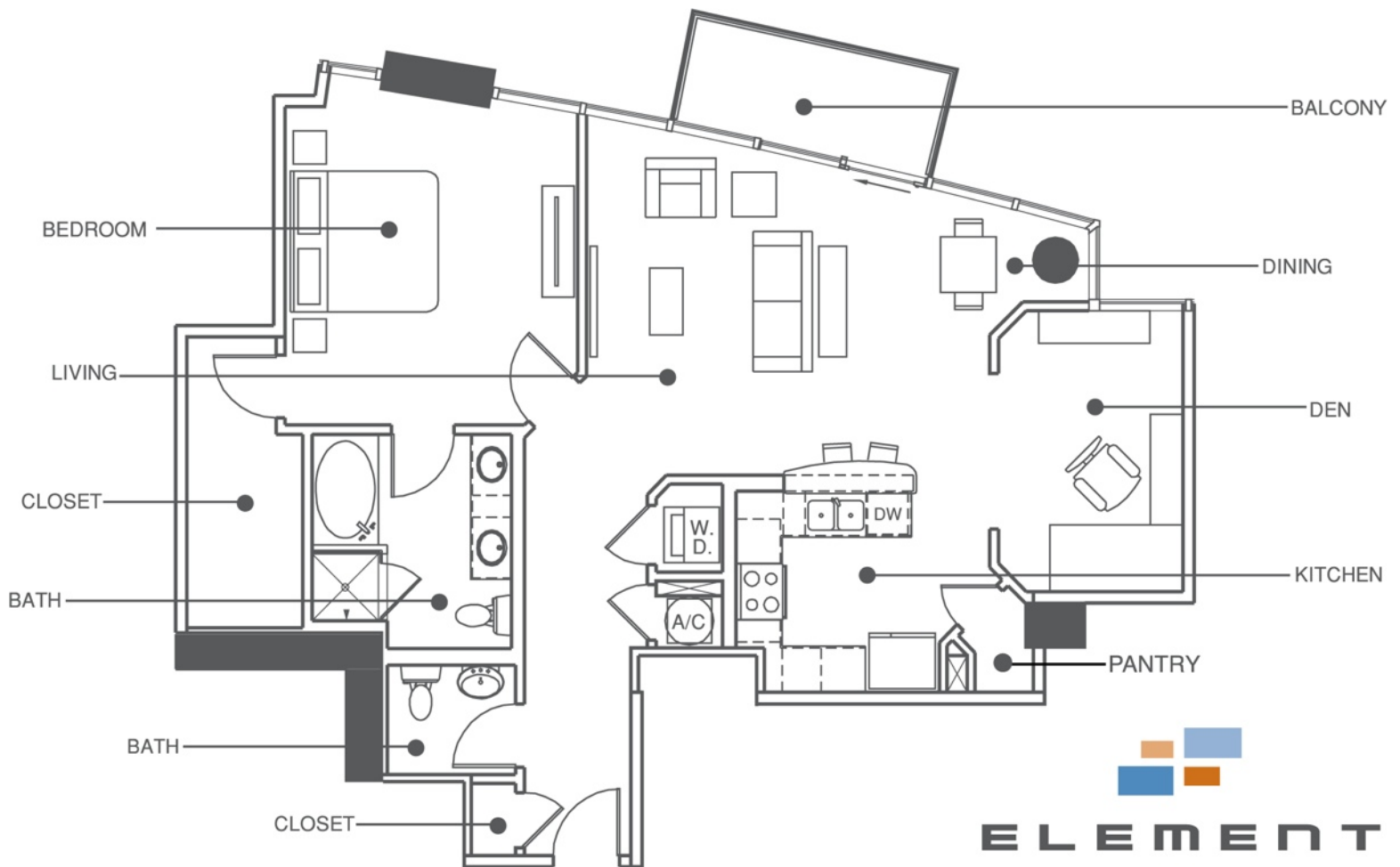
PH: 1-800-772-4962

Visit our website www.leadingapartments.com

Stylish and Sophisticated..... The Temporary Housing Experts!

Floor plans

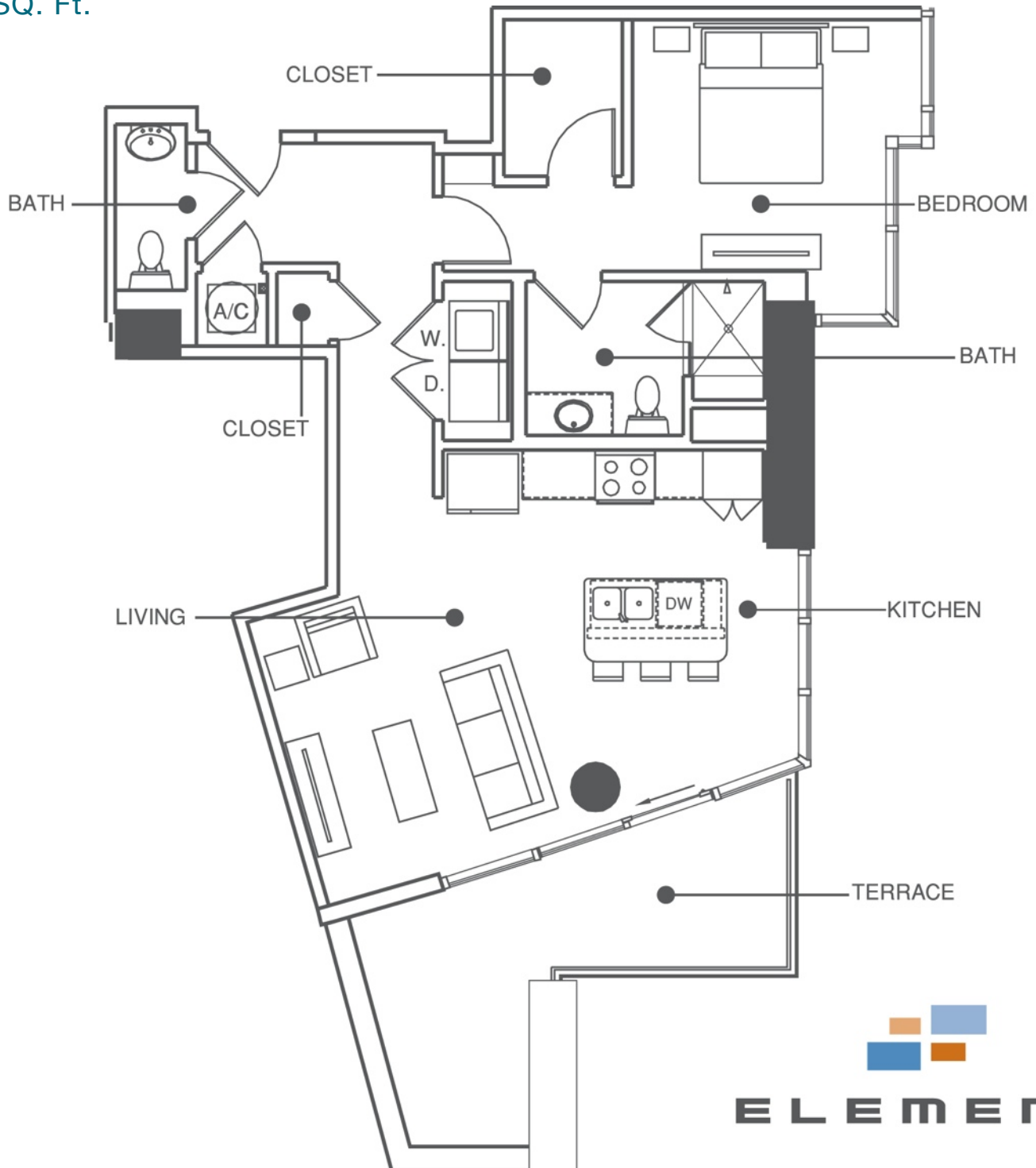
Residence 11 one bedroom + DEN
1150 SQ. Ft.



Stylish and Sophisticated..... The Temporary Housing Experts!

Floor plans

Residence 10 One bedroom
973 SQ. Ft.

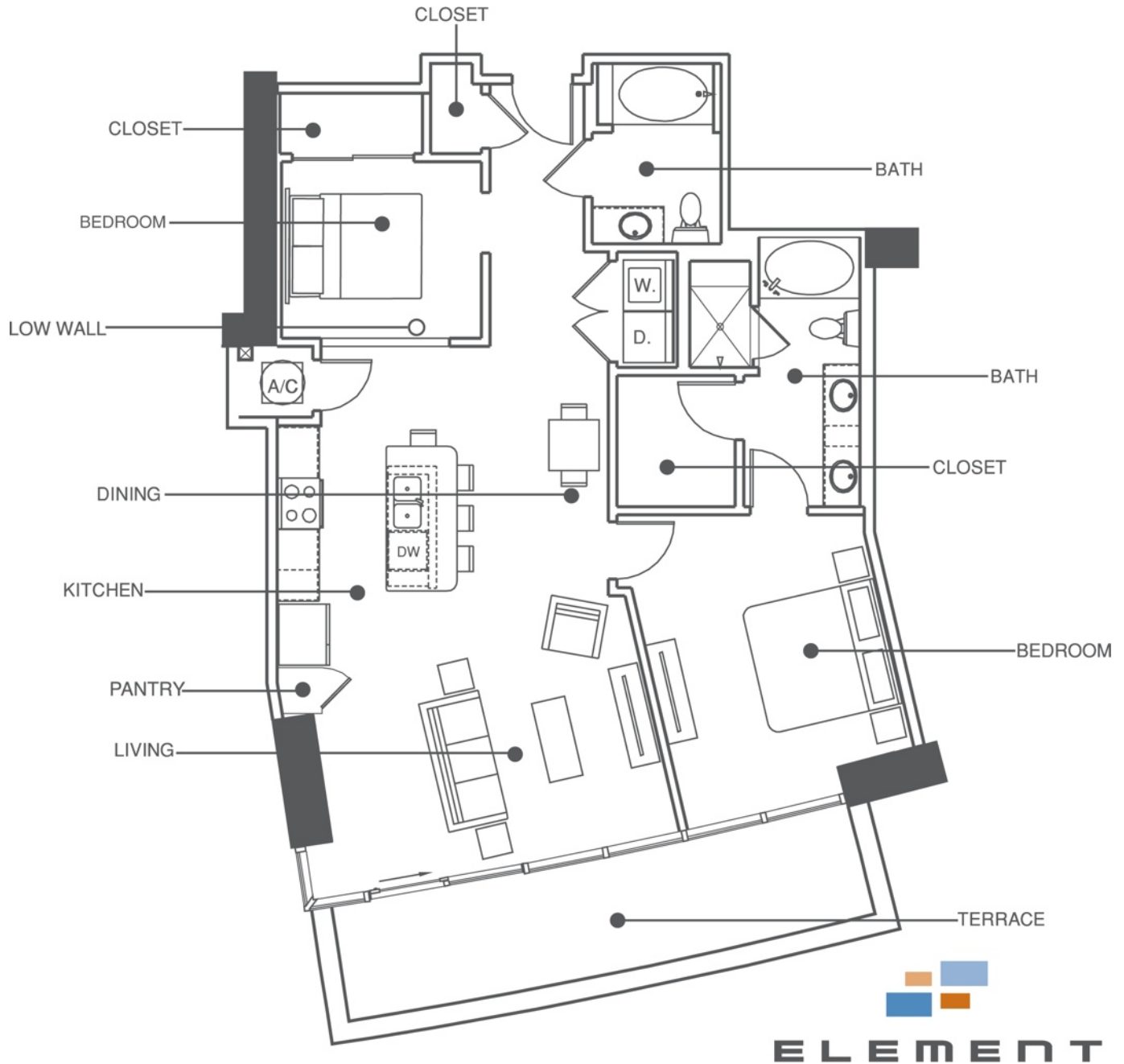


ELEMENT

Stylish and Sophisticated..... The Temporary Housing Experts!

Floor plans

Residence 08 TWO bedroom
1249 SQ. Ft.

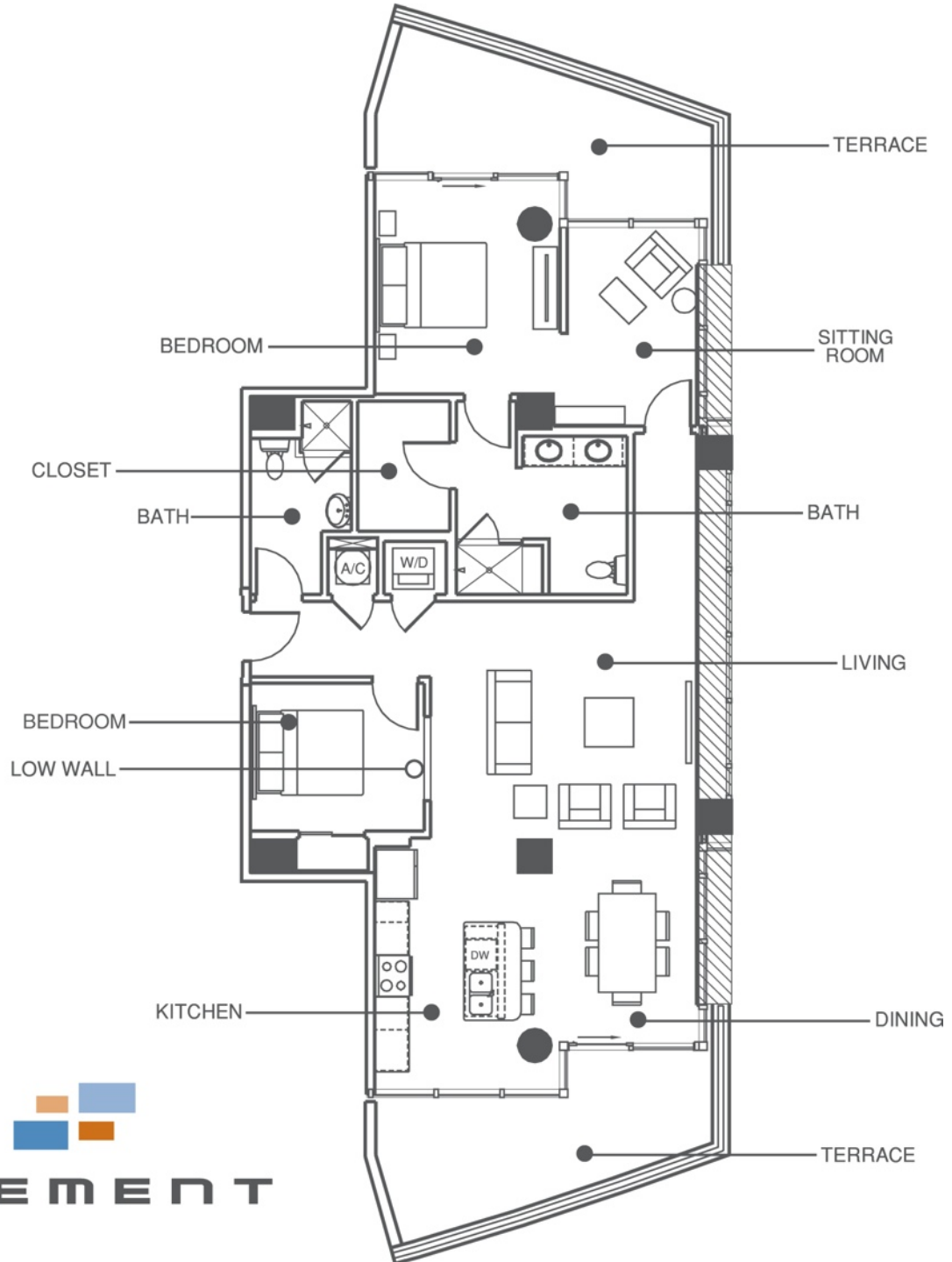


ELEMENT

Stylish and Sophisticated..... The Temporary Housing Experts!

Floor plans

Residence 12 TWO bedroom
1649 SQ. Ft.



Stylish and Sophisticated..... The Temporary Housing Experts!